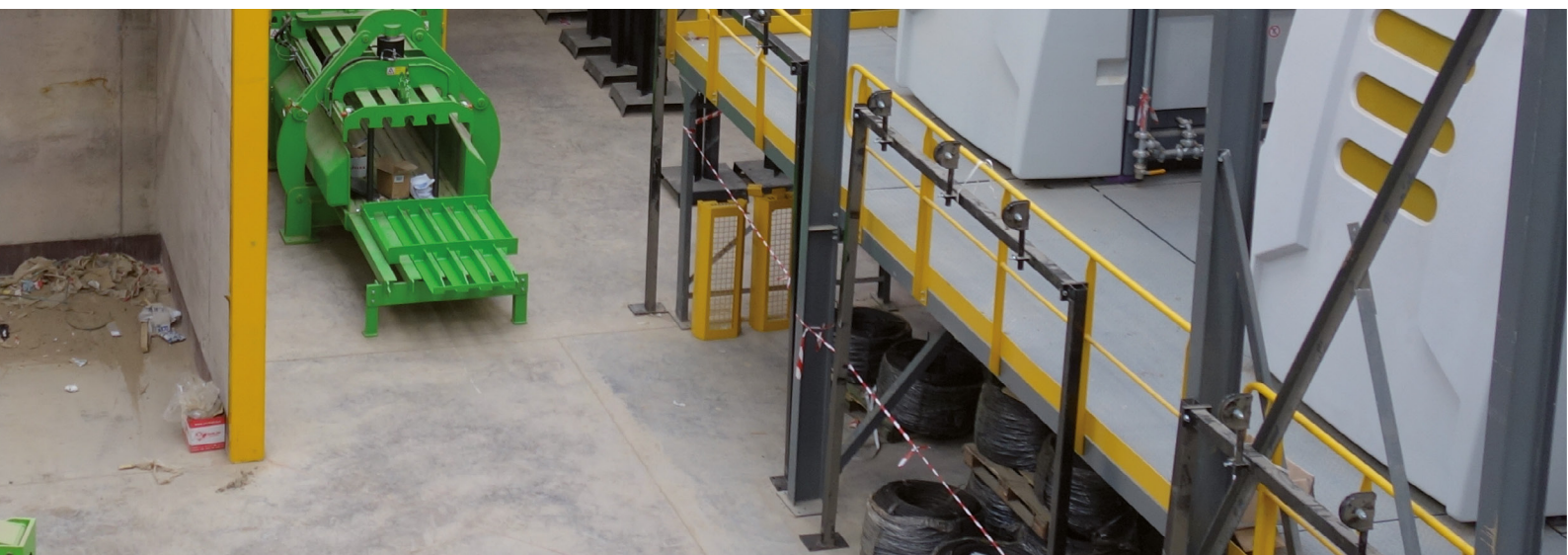




REFUSE DERIVED FUEL (RDF) TREATMENT PLANTS FOR REFUSE DERIVED FUEL (SRF/RDF)



ALL FROM ONE COMPANY - FROM THE DESIGN TO COMMISSIONING

Commercial waste treatment plant Hannover, Germany

Location	Hannover, Germany
Plant	Commercial treatment plant for the production of SRF
Plant capacity	24 Mg/h
Commissioning	2021
Client	Noris Entsorgung, Germany

Sorting plant for commercial waste & construction and demolition waste Hannover, Germany

Location	Hannover, Germany
Plant	Sorting plant for industrial waste and construction and demolition waste producing RDF
Plant capacity	30 Mg/h
Commissioning	2018
Client	Tönsmeier Entsorgung, Germany

Commercial waste treatment plant Rugby, United Kingdom

Location	Rugby, United Kingdom
Plant	Treatment plant for commercial and municipal solid waste for the production of SRF
Plant capacity	55 Mg/h commercial and domestic waste
Commissioning	2015
Client	Sita UK, United Kingdom

Commercial waste treatment plant Birmingham, United Kingdom

Location	Birmingham, United Kingdom
Plant	Commercial treatment plant for the production of SRF
Plant capacity	24 Mg/h industrial waste
Commissioning	2013
Client	Sita UK, United Kingdom

Sorting plant for commercial waste & construction and demolition waste Helsinki, Finland

Location	Helsinki, Finland
Plant	Sorting plant for industrial waste and construction and demolition waste producing RDF
Plant capacity	25 Mg/h industrial waste 30 Mg/h construction demolition waste
Commissioning	2010
Client	Lassila Tikanoja, Finland

Commercial waste treatment plant Northampton, United Kingdom

Location	Northampton, United Kingdom
Plant	Production of RDF/SRF
Plant capacity	25 Mg/h
Commissioning	2009
Client	HW Martin, United Kingdom

Treatment plant for RDF Meppen, Germany

Location	Meppen, Lower Saxony, Germany
Plant	Production of RDF/SRF
Plant capacity	30 Mg/h
Commissioning	2006
Client	Augustin Städtereinigung, Meppen, Germany

Treatment plant for RDF Flörsheim, Germany

Location	Flörsheim, Hesse, Germany
Plant	Production of RDF/SRF
Plant capacity	13 Mg/h
Commissioning	2006
Client	Remondis, Lünen, Germany

Treatment plant for RDF Cologne, Germany

Location	Cologne, North Rhine-Westphalia, Germany
Plant	Production of RDF/SRF
Plant capacity	20 Mg/h
Commissioning	2006
Client	GVG, Cologne, Germany

Treatment plant for RDF Wels, Austria

Location	Wels, Austria
Plant	Production of RDF/SRF
Plant capacity	18 Mg/h
Commissioning	2006
Client	Energie AG Wels, Austria

Treatment plant for RDF Ihlenberg, Germany

Location	Ihlenberg, Mecklenburg-Western Pomerania, Germany
Plant	Production of RDF/SRF
Plant capacity	25 Mg/h
Commissioning	2006
Client	RABA Ihlbenberg, Selmsdorf, Germany

Treatment plant for RDF Halle-Lochau, Germany

Location	Lochau, Lower Saxony, Germany
Plant	Production of RDF/SRF
Plant capacity	20 Mg/h
Commissioning	2006
Client	Fehr Umwelt, Döllnitz, Germany

Treatment plant for RDF **Ennigerloh, Germany**

Location	Ennigerloh, North Rhine-Westphalia, Germany
Plant	Production of RDF/SRF
Plant capacity	24 Mg/h
Commissioning	2006
Client	EKOWEST, Ennigerloh, Germany

Treatment plant for RDF **Meschede, Germany**

Location	Meschede, North Rhine-Westphalia, Germany
Plant	Production of RDF/SRF
Plant capacity	30 Mg/h
Commissioning	2005
Client	Remondis, Lünen, Germany

Treatment plant for RDF **Neuss, Germany**

Location	Neuss, North Rhine-Westphalia, Germany
Plant	Production of RDF/SRF
Plant capacity	30 Mg/h
Commissioning	2005
Client	EGN, Grevenbroich, Germany

Treatment plant for RDF **Bochum, Germany**

Location	Bochum, North Rhine-Westphalia, Germany
Plant	Production of RDF/SRF
Plant capacity	30 Mg/h
Commissioning	2005
Client	Weber, Bochum, Germany

Treatment plant for RDF **Kerpen, Germany**

Location	Kerpen, North Rhine-Westphalia, Germany
Plant	Production of RDF/SRF
Plant capacity	20 Mg/h
Commissioning	2005
Client	Schönmackers, Kerpen, Germany

Treatment plant for RDF **Asdonkshof, Germany**

Location	Kamp Lintfort, North Rhine-Westphalia, Germany
Plant	Production of RDF/SRF
Plant capacity	20 Mg/h
Commissioning	2005
Client	KWA, Kreis Wesel, Kamp Lintfort, Germany

Treatment plant for RDF **Wiefels, Germany**

Location	Wiefels, Lower Saxony, Germany
Plant	Production of RDF/SRF
Plant capacity	20 Mg/h
Commissioning	2004
Client	GMA, Wangerland, Germany

Treatment plant for RDF **Winschoten, The Netherlands**

Location	Winschoten, The Netherlands
Plant	Production of RDF/SRF
Plant capacity	15 Mg/h
Commissioning	2002
Client	AlBra Winschoten bv, Winschoten, The Netherlands

Treatment plant for RDF **Delitzsch, Germany**

Location	Delitzsch, Saxony, Germany
Plant	Production of RDF/SRF
Plant capacity	50,000 Mg/a
Commissioning	2000
Client	Kreiswerke Delitzsch, Delitzsch, Germany
2002 fire damage:	New installation and plant extension
Plant capacity	60,000 Mg/a
Commissioning	2002

Treatment plant for RDF Akea, Germany

Location	Erftstadt, North Rhine-Westphalia, Germany
Plant	Production of RDF/SRF
Plant capacity	45,000 Mg/a (one-shift-operation)
Commissioning	1998
Client	Remondis, Lünen, Germany

Production of Pellets as RDF Krefeld, Germany

Location	Krefeld, North Rhine-Westphalia, Germany
Plant	Production of pellets as RDF
Plant capacity	13,000 Mg/a (one-shift-operation)
Commissioning	1995
Client	Remondis, Krefeld, Germany

OUR LOCATIONS WE GET THE BEST OUT

SUTCO® RECYCLINGTECHNIK GMBH

Paffrather Straße 102-116
51465 Bergisch Gladbach
Germany

info@sutco.de

SUTCO® UK LTD.

Palmerston House
814 Brighton Road
Purley, Surrey CR8
United Kingdom

info@sutco-uk.com

SUTCO BRASIL LTDA.

Av. Ana Costa, nº 61, terreo, sala 22
Bairro Gonzaga, Santos, SP
CEP 11.060-001
Brasil

info@sutco.com.br

SUTCO® SWEDEN AB

c/o Rödl & Partner Nordic AB
Jungmansgatan 12
211 11 Malmö
Sweden

info@sutco.de

SUTCO® POLSKA

Spółka z o.o., ul. Hutnicza 10
40-241 Kattowice
Poland

info@sutco.pl

SUTCO® IBÉRICA RECYCLING TECHNOLOGY S.L.

Avda. Diagonal 463 BIS, 7º, 2ª
08036 Barcelona
Spain

info@sutco.es

SUTCO SINGAPORE PTE. LTD.

4 Battery Road # 25-01
Bank of China Building
Singapore, 049908
Singapore

info@sutco.de

SUTCO® RECYCLING TECHNOLOGY ROMANIA SRL.

Str. Gheorghe Țițeica, Nr 121C, Etaj 3
Sector 2, Bucharest
Romania, Post Cod: 020295

info@sutco.ro



WWW.SUTCO.COM

11/2023

